

Installation guidelines. Please contact customer service for installation problems. We will serve you as soon as possible

Model

2019 mazda6 Installation Guidelines 1

When installing, please make sure that the car is turned off. Otherwise, the equipment may be damaged

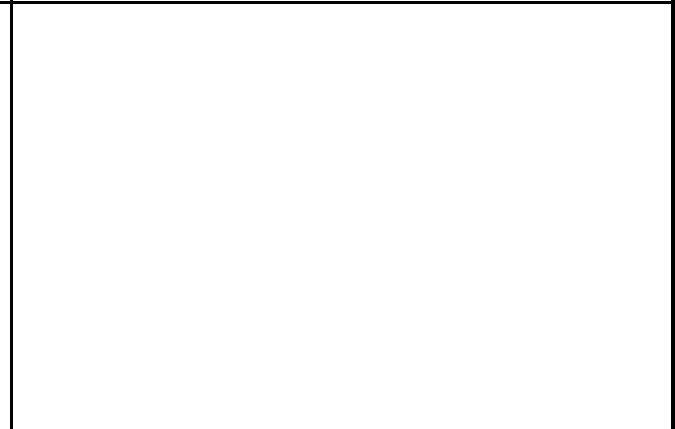
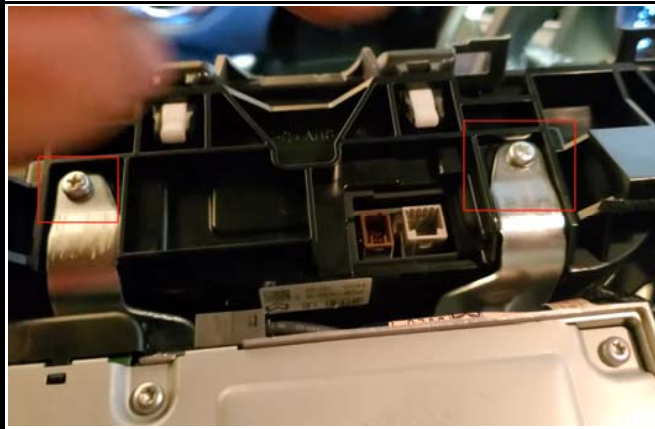
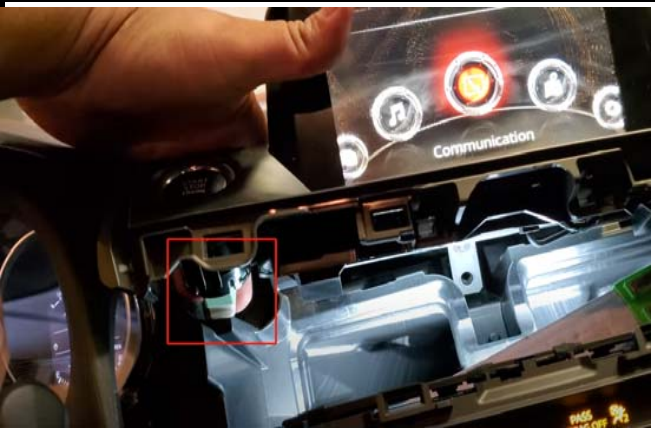
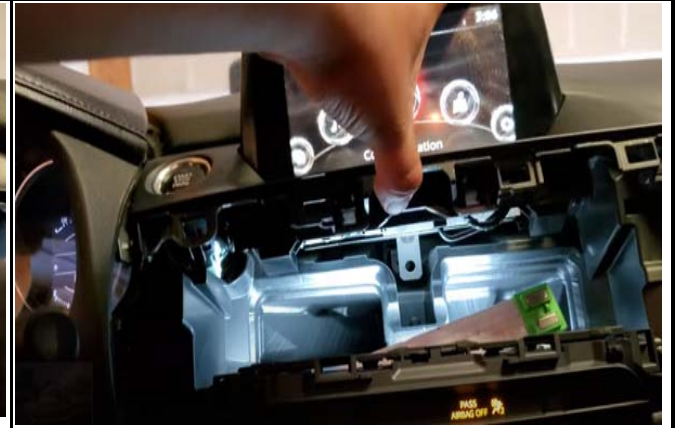


Installation guidelines. Please contact customer service for installation problems. We will serve you as soon as possible

Model

2019 mazda6 Installation Guidelines 2

When installing, please make sure that the car is turned off. Otherwise, the equipment may be damaged



Installation guidelines. Please contact customer service for installation problems. We will serve you as soon as possible

Model

Instructions for Mazda cable connection 1

When installing, please make sure that the car is turned off. Otherwise, the equipment may be damaged

All models of MAZDA cars have the same cable connection method, Don't worry if the photos shown are different from your car.

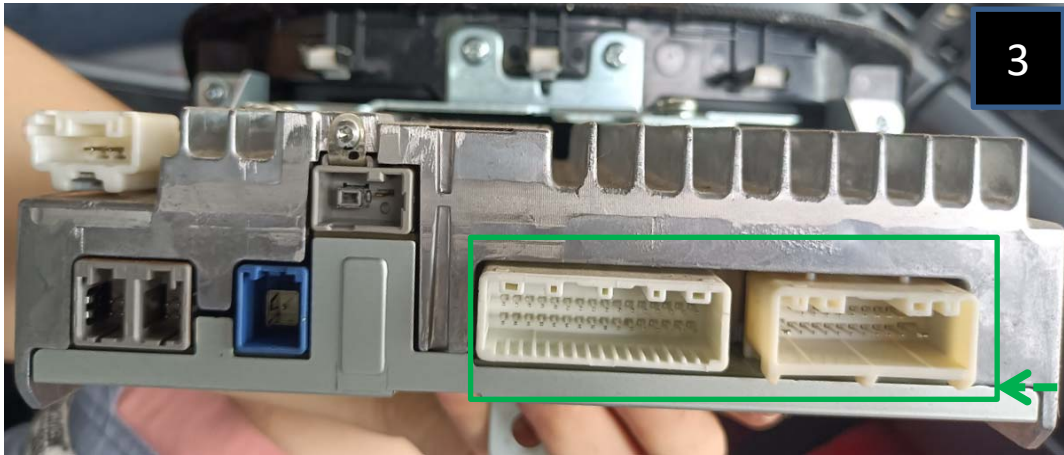
1



2

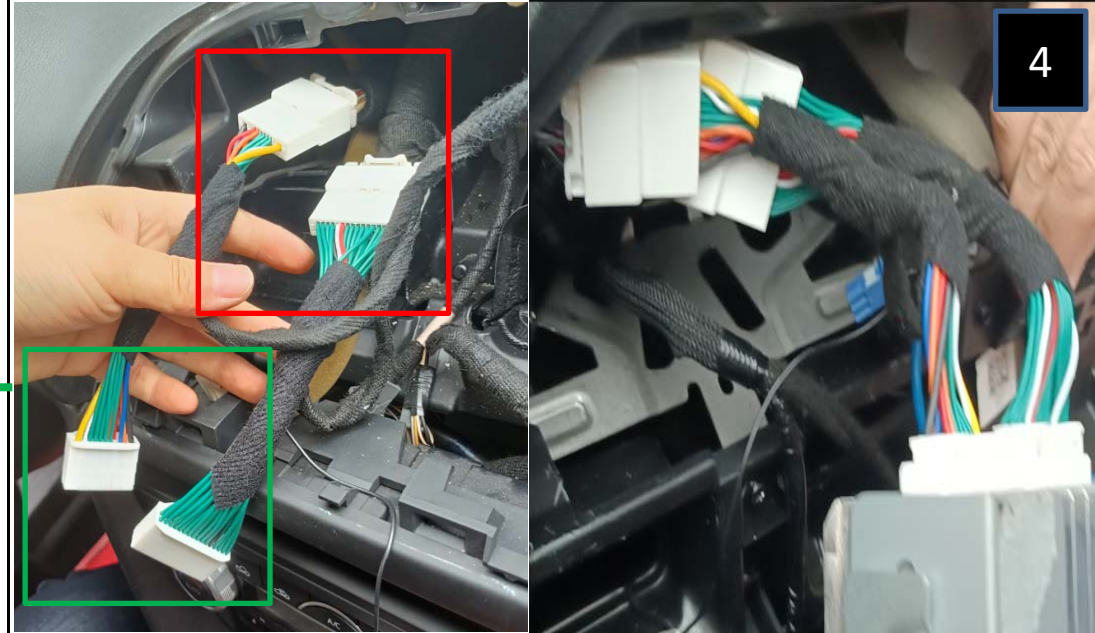


3



The Android cable is cross-connected with the car's original cable

4

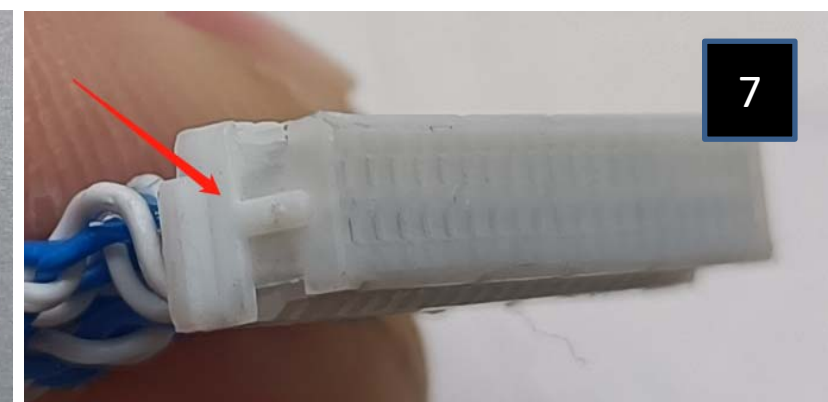
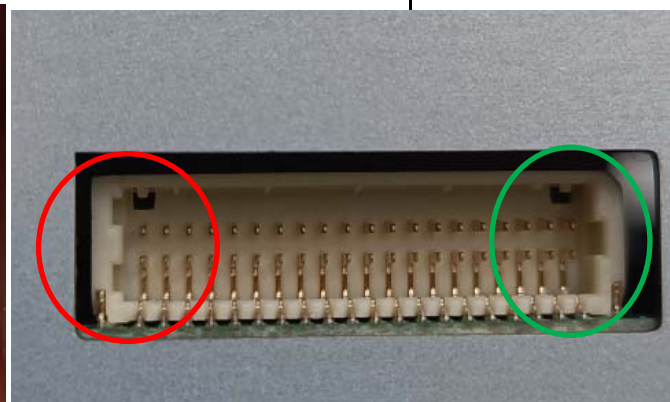
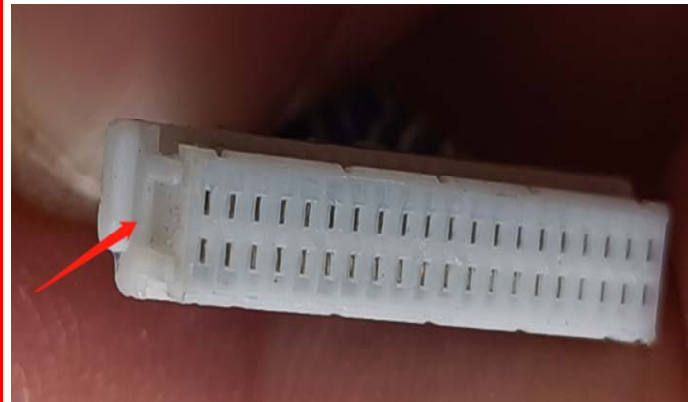


Installation guidelines. Please contact customer service for installation problems. We will serve you as soon as possible

Model

Instructions for Mazda cable connection 2

When installing, please make sure that the car is turned off. Otherwise, the equipment may be damaged



When installing, please pay attention to the correct connection of this interface, do not plug the reverse interface, and do not damage the contact pins of the interface

Installation guidelines. Please contact customer service for installation problems. We will serve you as soon as possible

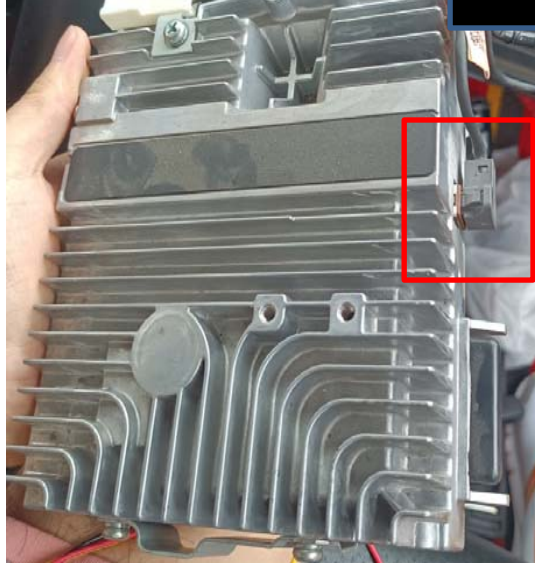
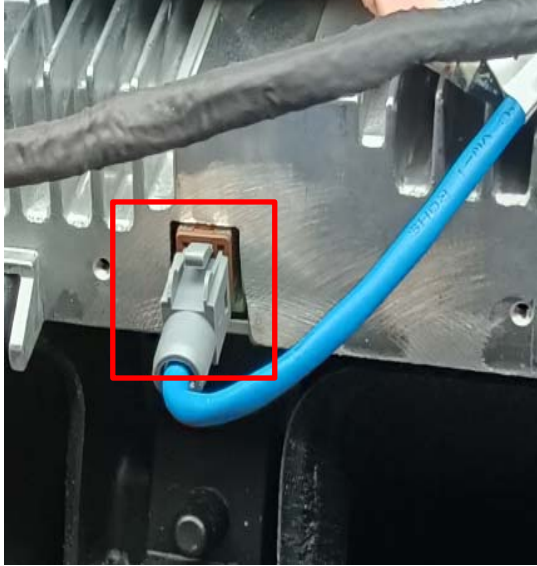
Model

Instructions for Mazda cable connection 3

When installing, please make sure that the car is turned off. Otherwise, the equipment may be damaged

Note the location of the LVDS interface, do not connect incorrectly

8



The metal side of the screen interface is facing up

9



Installation guidelines. Please contact customer service for installation problems. We will serve you as soon as possible

Model

Mazda AUX connection instructions 1

When installing, please make sure that the car is turned off. Otherwise, the equipment may be damaged



AUX Cable 1

Only one of these two cables is used

AUX Cable 2



10



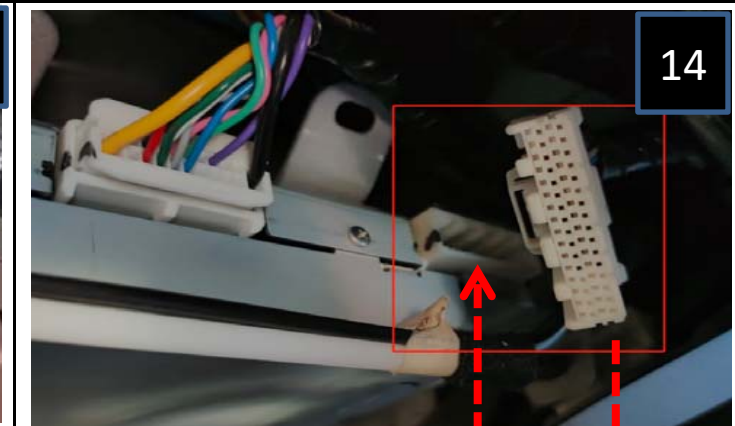
11



12



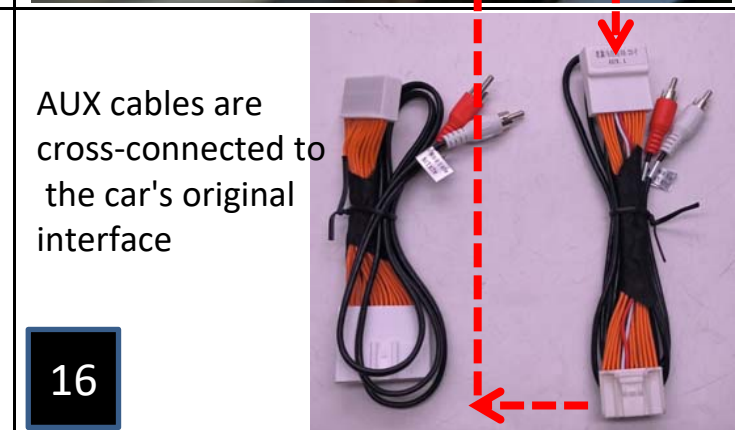
13



14



15



16

AUX cables are cross-connected to the car's original interface

Installation guidelines. Please contact customer service for installation problems. We will serve you as soon as possible

Model

Mazda AUX connection instructions 2

When installing, please make sure that the car is turned off. Otherwise, the equipment may be damaged



Very important.



21

Once the setup is complete. Please click on the top right corner of the screen to return to Android



Installation guidelines. Please contact customer service for installation problems. We will serve you as soon as possible

Model

Mazda AUX connection instructions 2

When installing, please make sure that the car is turned off. Otherwise, the equipment may be damaged

22

Mazda right side steering wheel car, AUX cross connect cable under driver's seat

23



24



25



Select AUX

26

The other cable connections and settings of the right steering wheel are the same as those of the left steering wheel

Installation guidelines. Please contact customer service for installation problems. We will serve you as soon as possible

Model

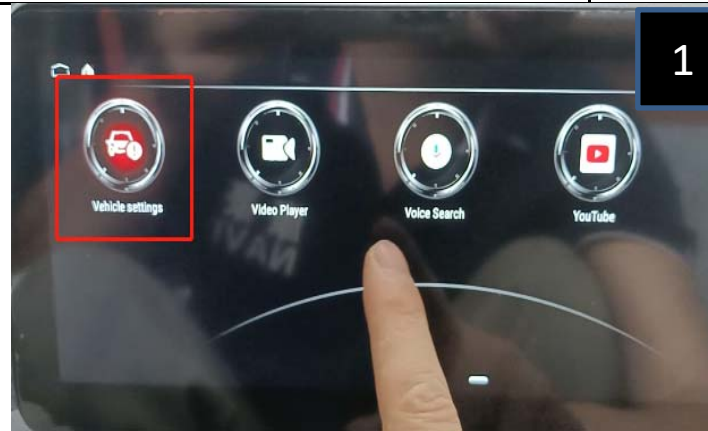
MAZDA Reversing camera troubleshooting 1

When installing, please make sure that the car is turned off. Otherwise, the equipment may be damaged

A

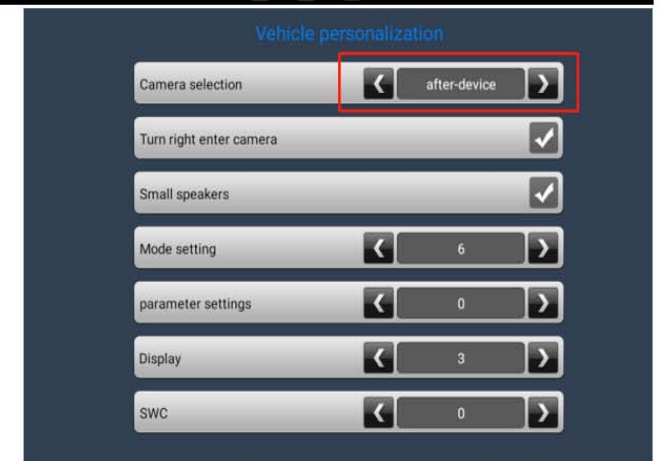
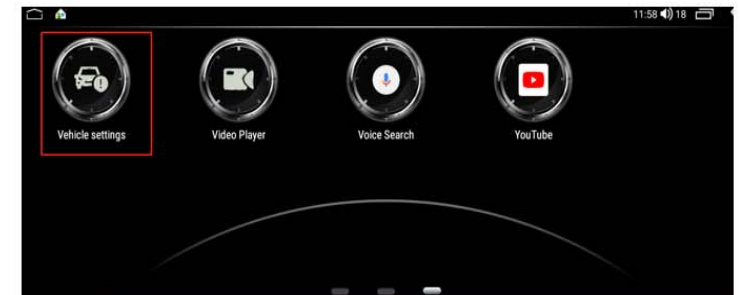
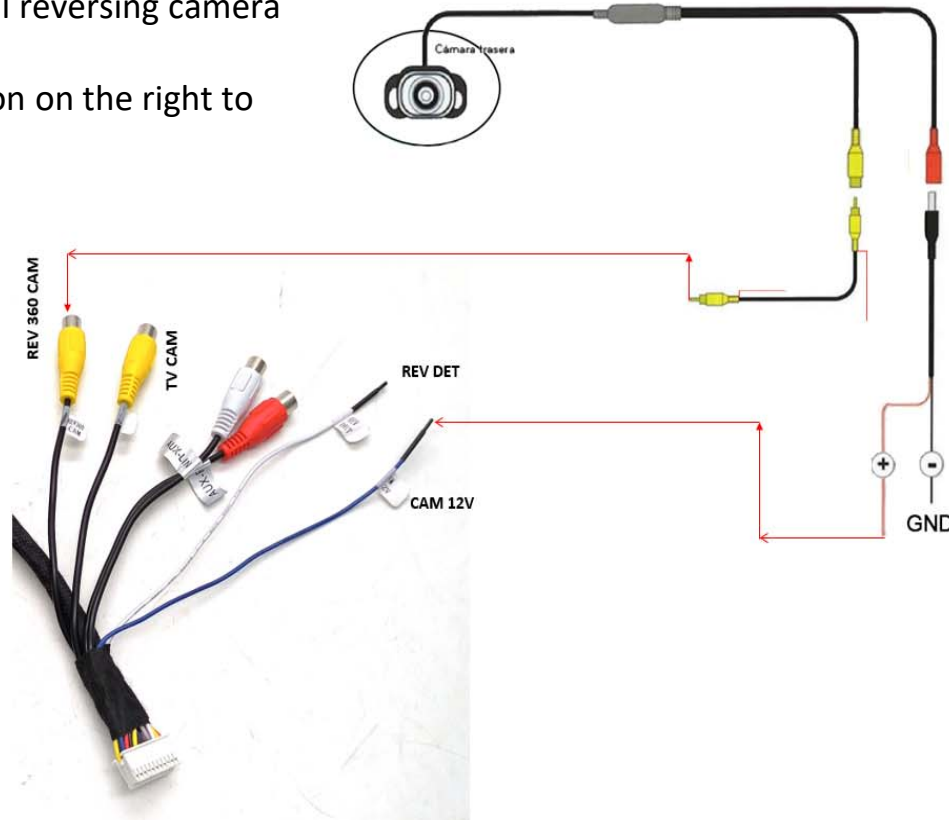
If the reversing camera is using the original factory camera of the car

Follow the illustration on the right to select **car-device**



If using an additional reversing camera

Follow the illustration on the right to select **After device**



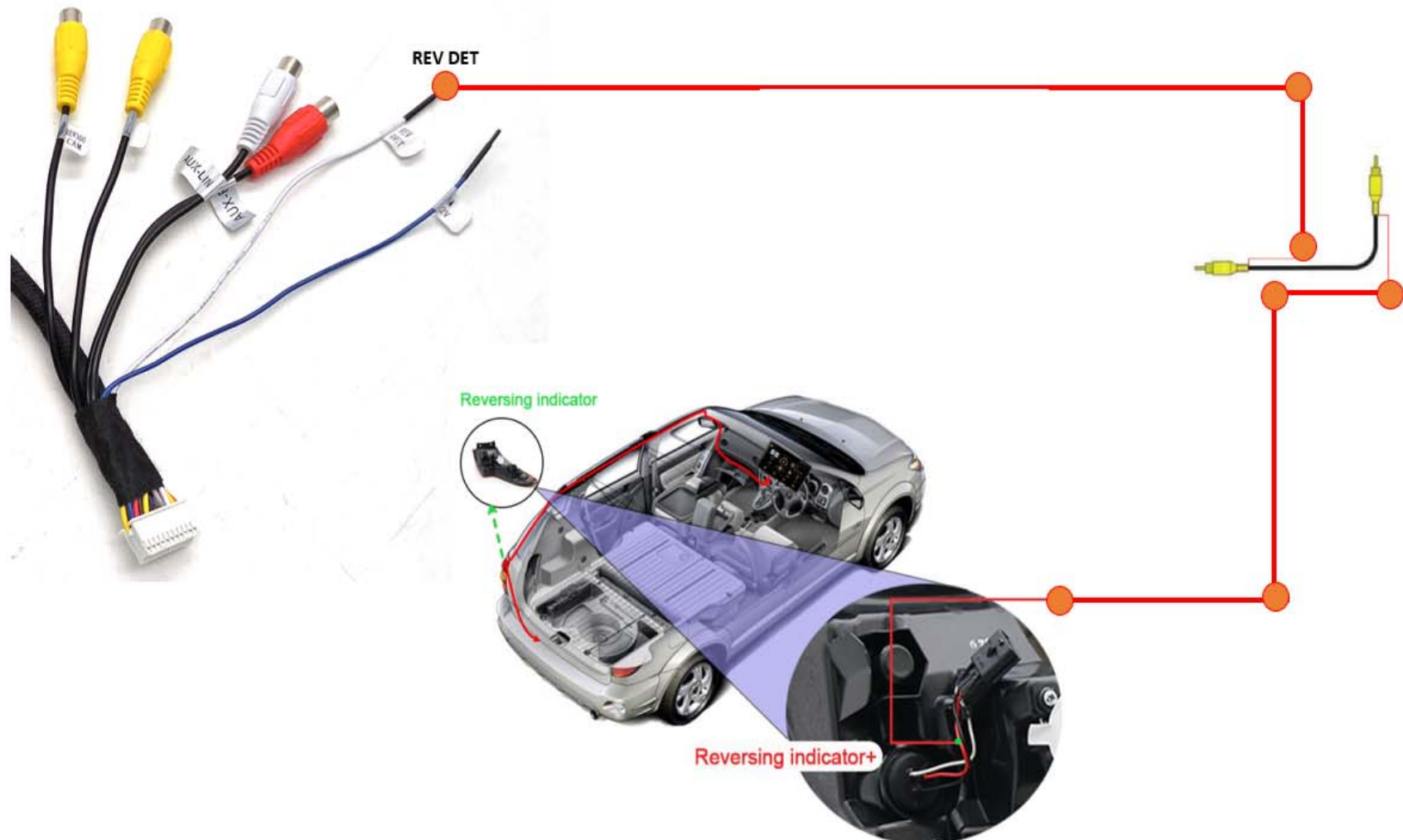
Model

MAZDA Reversing camera troubleshooting 2

When installing, please make sure that the car is turned off. Otherwise, the equipment may be damaged

B

If your car specification is manual gear. When the car is in reverse gear, the screen does not change in any way. Please use the camera cable included in the package to connect the power supply of the car's reversing indicator to the reversing signal cable.



Model

MAZDA Reversing camera troubleshooting 3

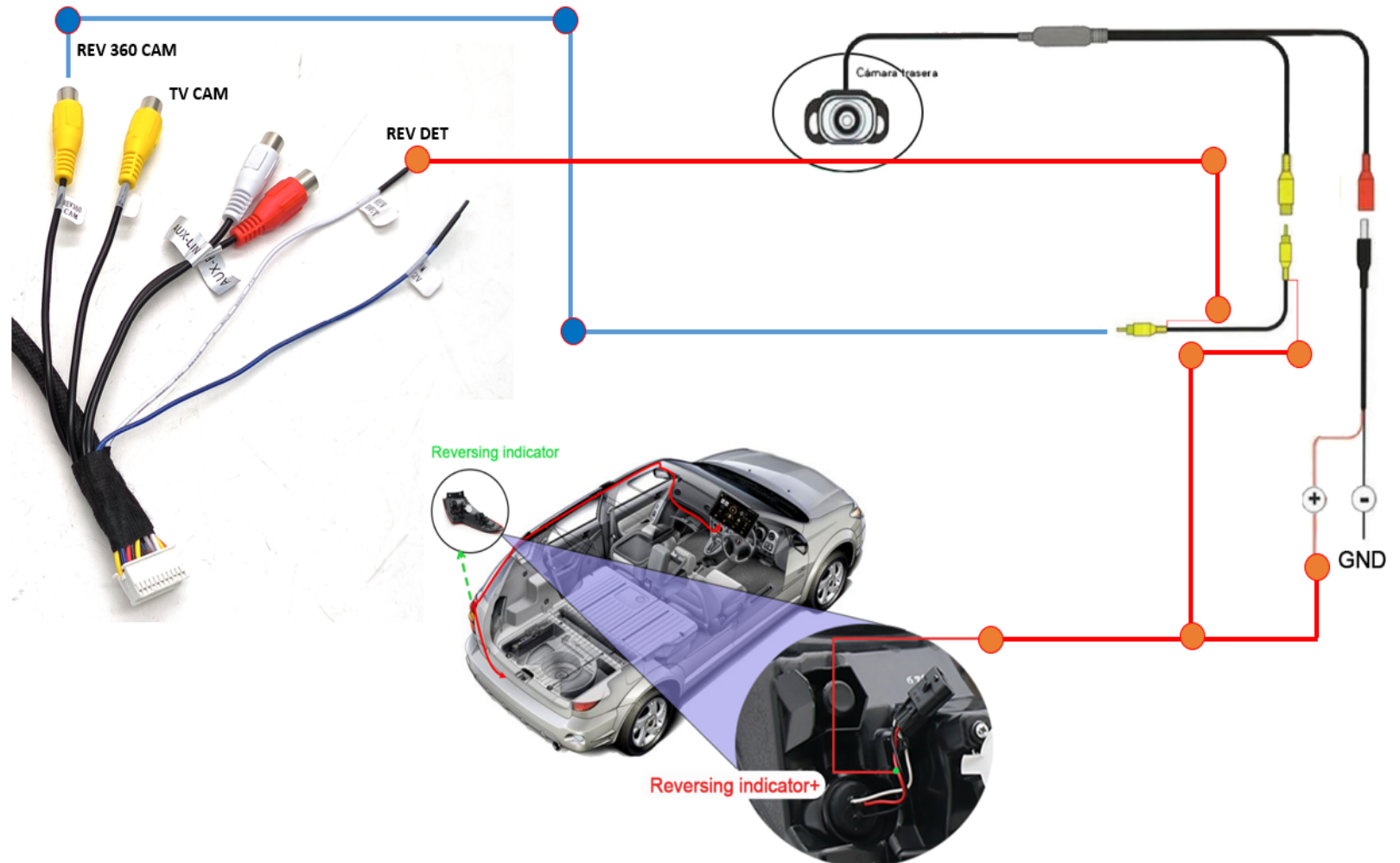
When installing, please make sure that the car is turned off. Otherwise, the equipment may be damaged

B

If your car specification is manual gear.
When the car is in reverse gear, the screen does not change in any way.

If using an additional reversing camera

Follow the illustration on the right to select **After device**



Model

MAZDA Troubleshooting

When installing, please make sure that the car is turned off. Otherwise, the equipment may be damaged

1.Touch does not work after the device boots

Make sure all cables are securely connected. Then press the cyclic reset button on the left side of the screen to check if the fault is resolved after the device restarts



1.Device joystick failure, original AUX undetectable, inability to select AUX option, and other failures

1.Check that all cables are securely connected, then leave all cables unchanged, disconnect only the original power connector of the car, wait 1 minute, reconnect the power connector (note that other cables that have already been connected remain unchanged, do not disconnect them)

2.You can also keep all cable connections secure. Keep the cable unchanged and disconnect the negative terminal of the car battery. Wait 1 minute. Reconnect the negative terminal of the battery and turn on the device,

