
Contents

1. Product List.....	1
2. Product Functions.....	1
3. Product Installation.....	1
4. CarPlay / Android Auto Connection.....	2
5. iPhone Wireless Mirroring.....	4
6. Android Phone Wireless Mirroring.....	6
7. Sound Setting for CarPlay / Android Auto.....	8
8. Rear Camera Connections.....	9
9. Common Operations Introduction.....	9
10. Echo Cancellation.....	10

1. Product List



2. Product Functions

2.1 Product main functions:

- 1) Wireless Apple CarPlay
- 2) Android Auto
- 3) iPhone Air Play/mirror link
- 4) Android phone mirror link
- 5) Aftermarket rear view & DVR & 360 camera
- 6) USB play (music, video)

3. Product Installation

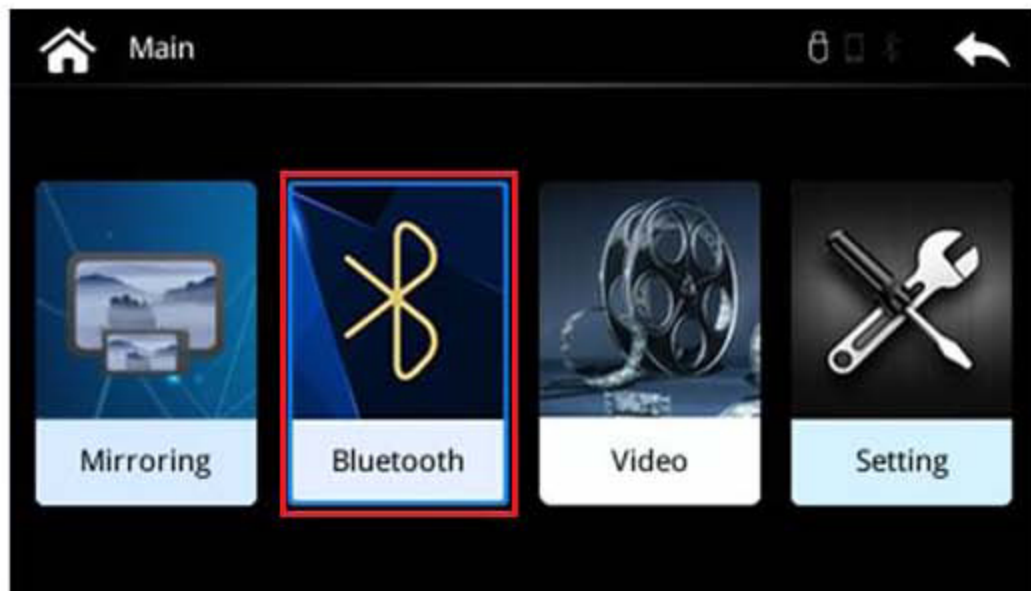
In the Co-pilot gloves box, replace the factory Becker Navi box with the new CarPlay box



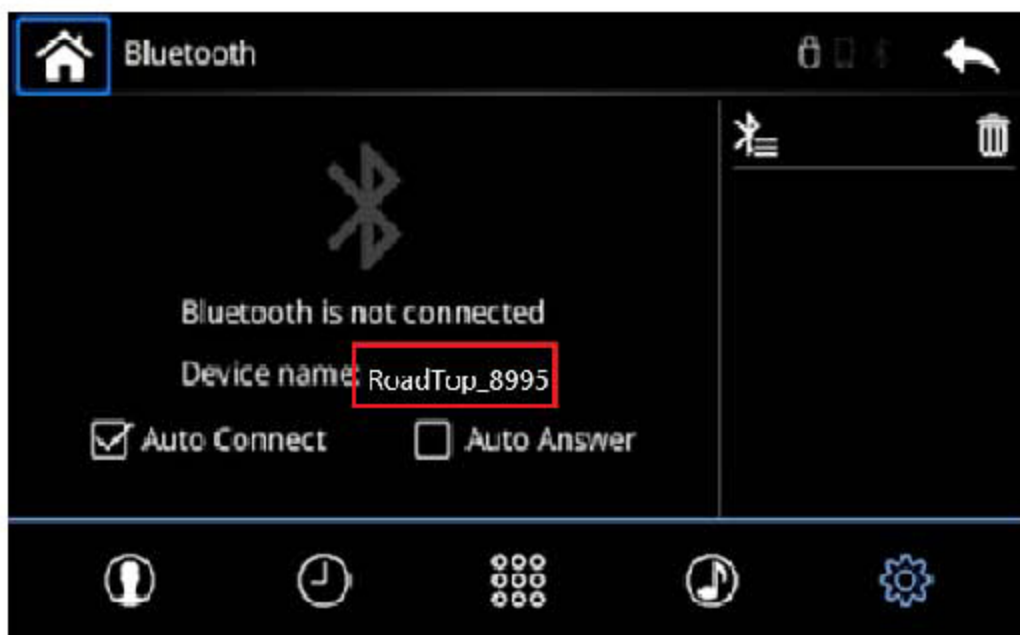
4. CarPlay / Android Auto Connection

Please follow below steps to connect the iPhone or android phone with the device to use CarPlay or Android Auto functions.

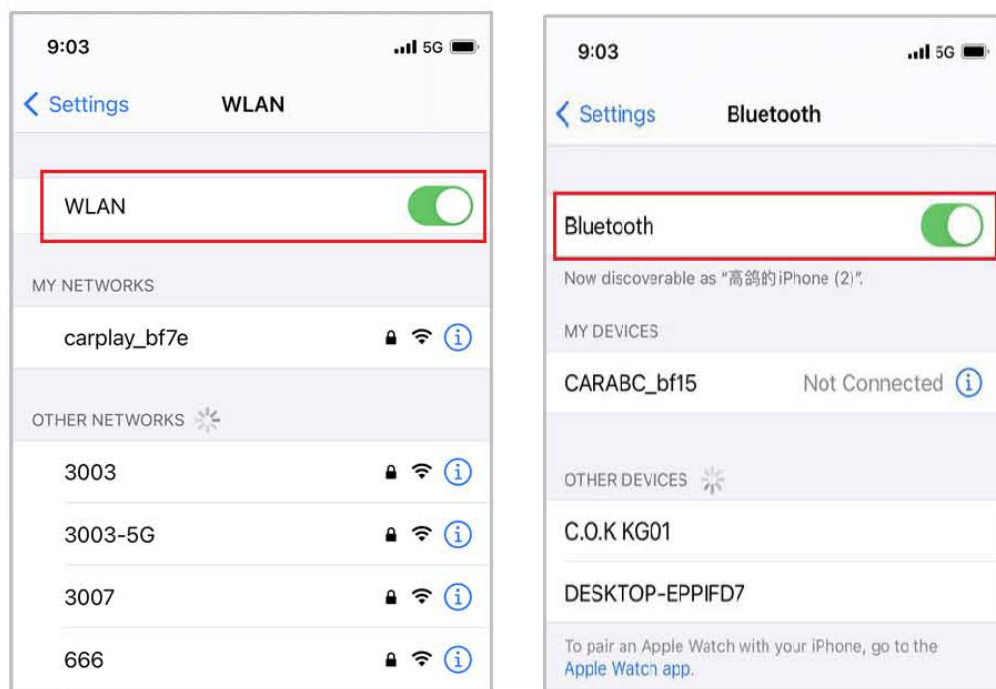
Step 1: Select "Bluetooth" option on the car screen.



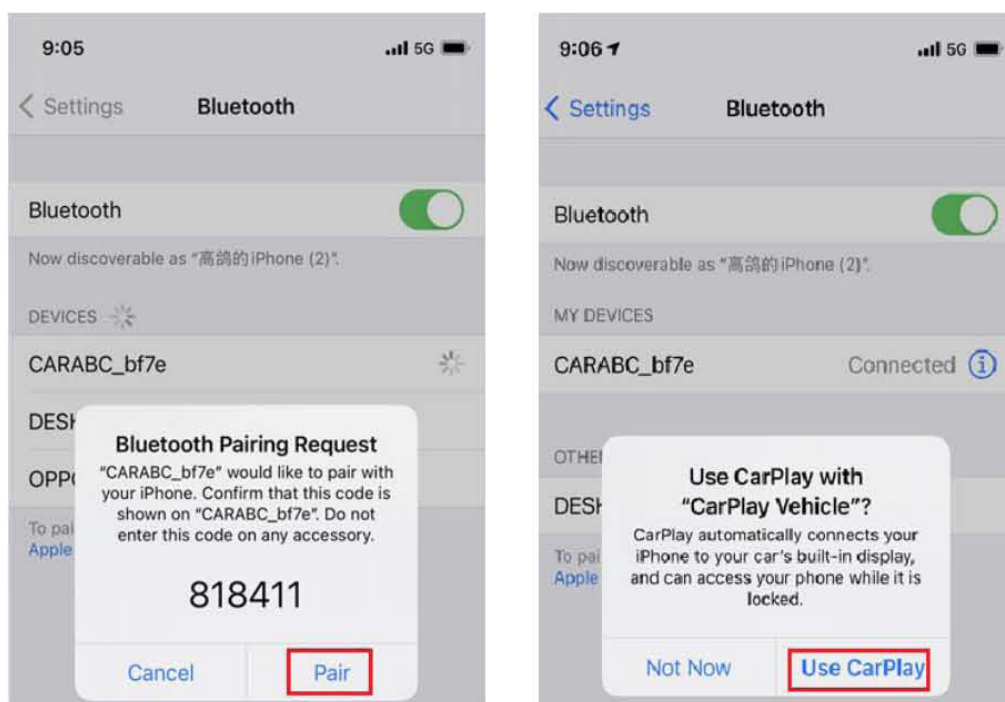
Step 2: Check the Bluetooth name shown as "RoadTop_xxxx" in the screen, "xxxx" is different for different devices.



Step 3: Turn on your iPhone/Android phone “WLAN” and “Bluetooth” to search new available device.

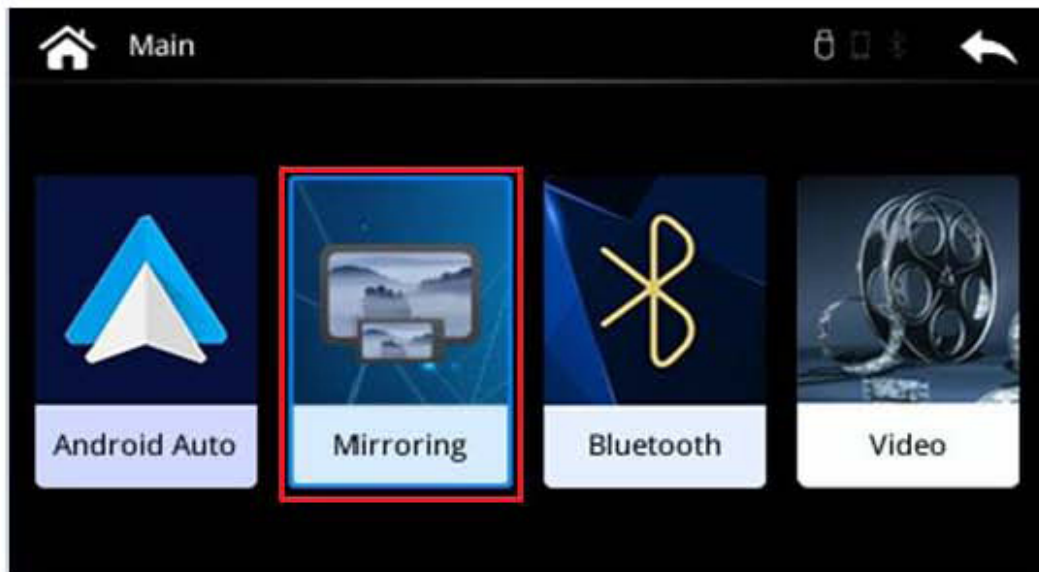


Step 4: Select the Bluetooth name starting with "CARABC-xxx" and press “Pair” on your Phone, and then select “Use CarPlay” after the Bluetooth pairing is successful.



5. iPhone Wireless Mirroring

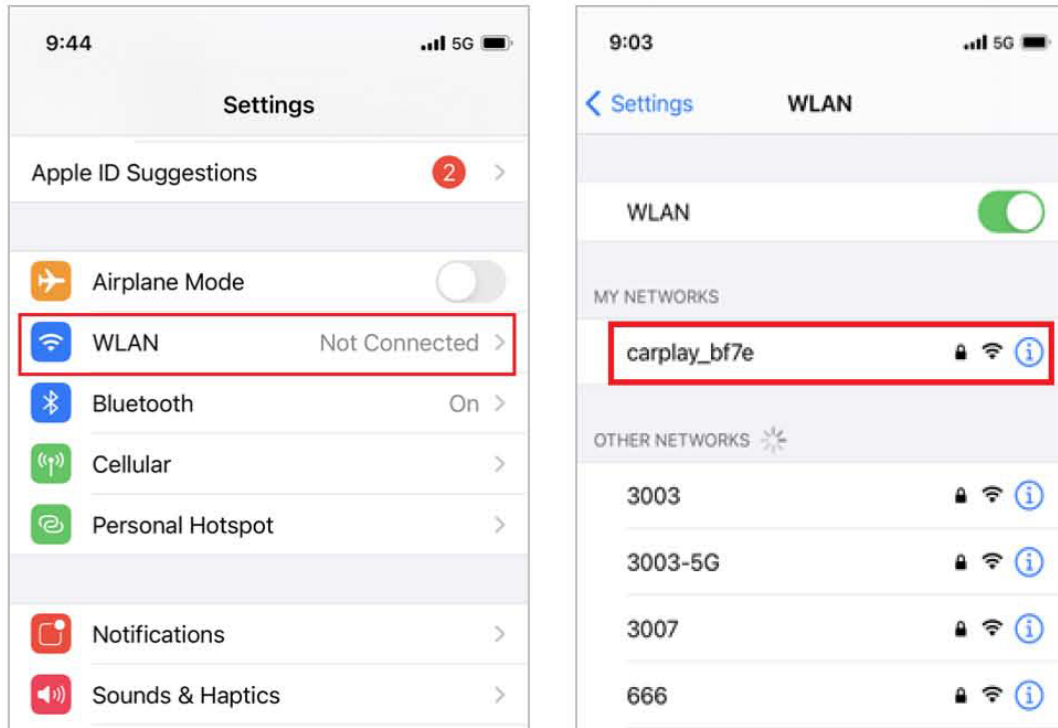
Step 1: Select "Mirroring" option on the car screen.



Step 2: Check the SSID naming with "CARABC-xxx" and password shown as "88888888" in the down-side of the screen.

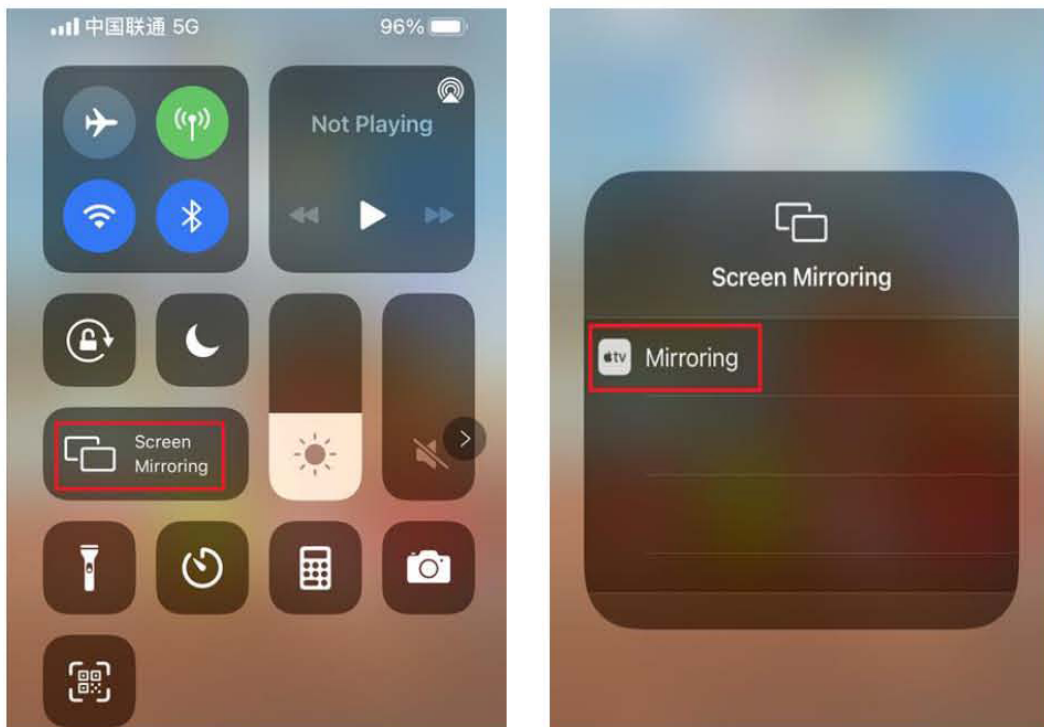


Step 3: Turn on "WLAN" of your iPhone to enter WLAN list, check the WLAN named "CarPlay-xxxx" and select it, and then input password "88888888".



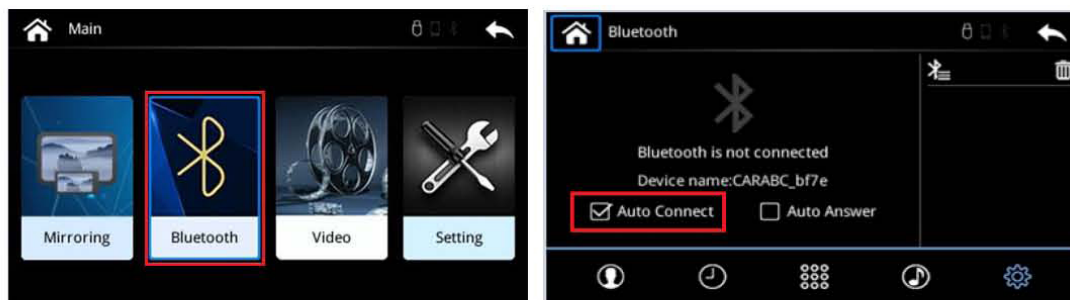
Step 4: After mirroring connection successful, return to the main interface of iPhone, open the shortcut menu bar, select "screen mirroring" and turn it on.

Step 5: When the phone "Screen Mirroring" is turned on, select "Mirroring" to complete the wireless screen mirroring.

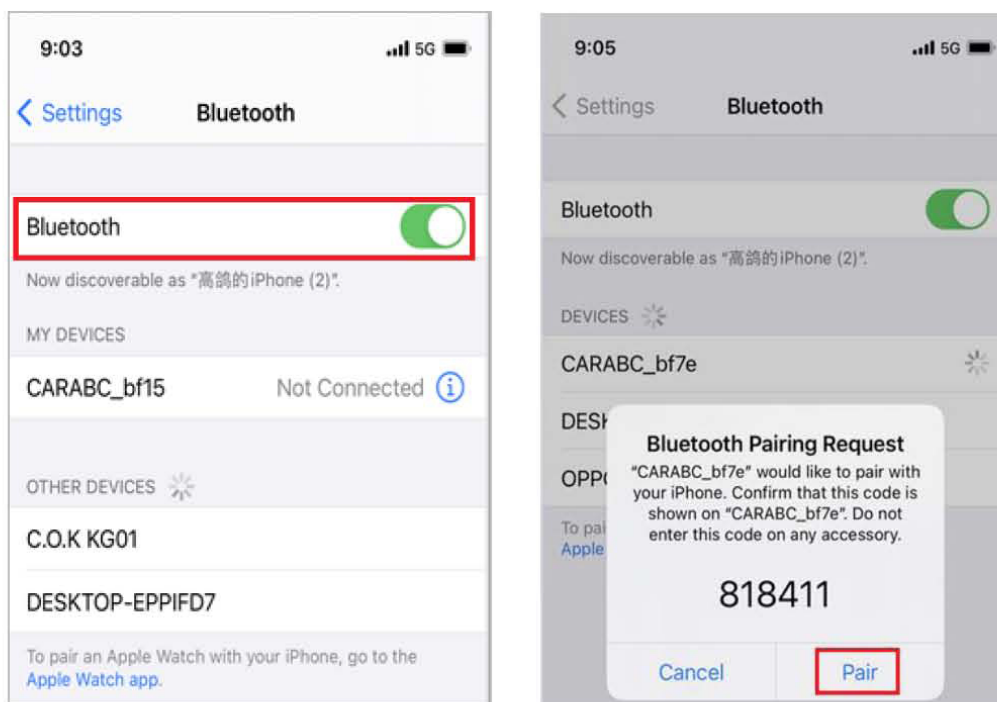


6. Android Phone Wireless Mirroring

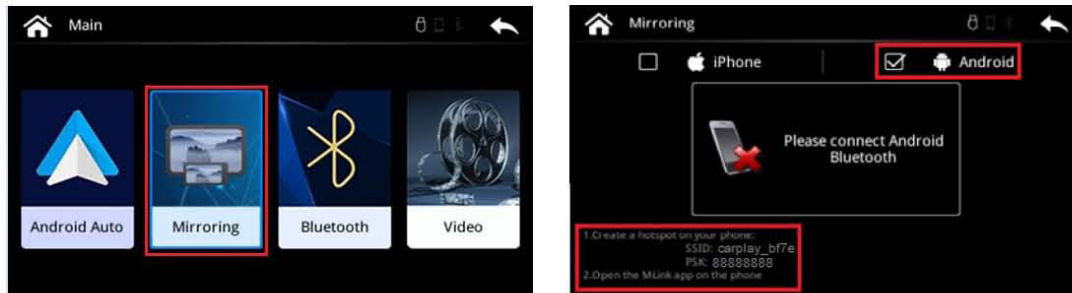
Step 1: Select “Bluetooth” option on the car screen to enter Bluetooth interface and select “Auto Connect”.



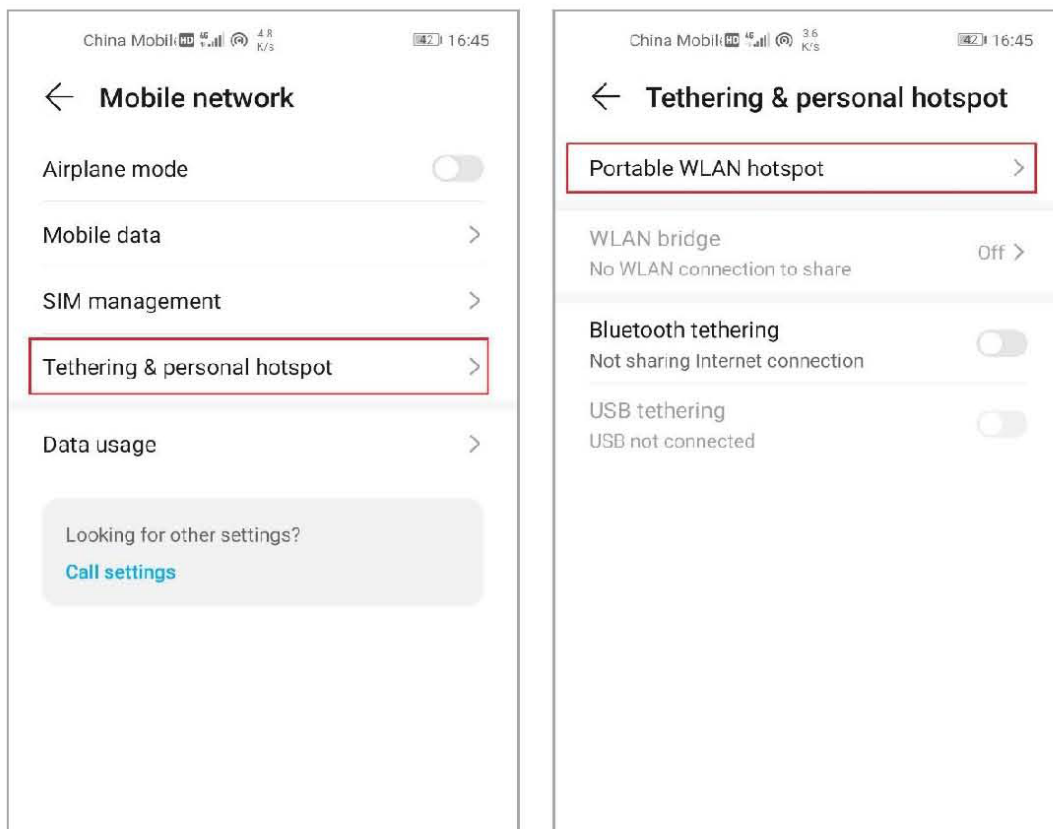
Step 2: Download the "mLink" APP on the phone, and turn on the Bluetooth to search the available device naming as "CARABC-xxx" in the list, and select it to connect and pair with CarPlay decoder.



Step 3: Return to car screen to select “mirroring”, select "Android" option by the knob in the mirroring interface, the hotspot name and password will be shown at the left corner of the mirroring interface.



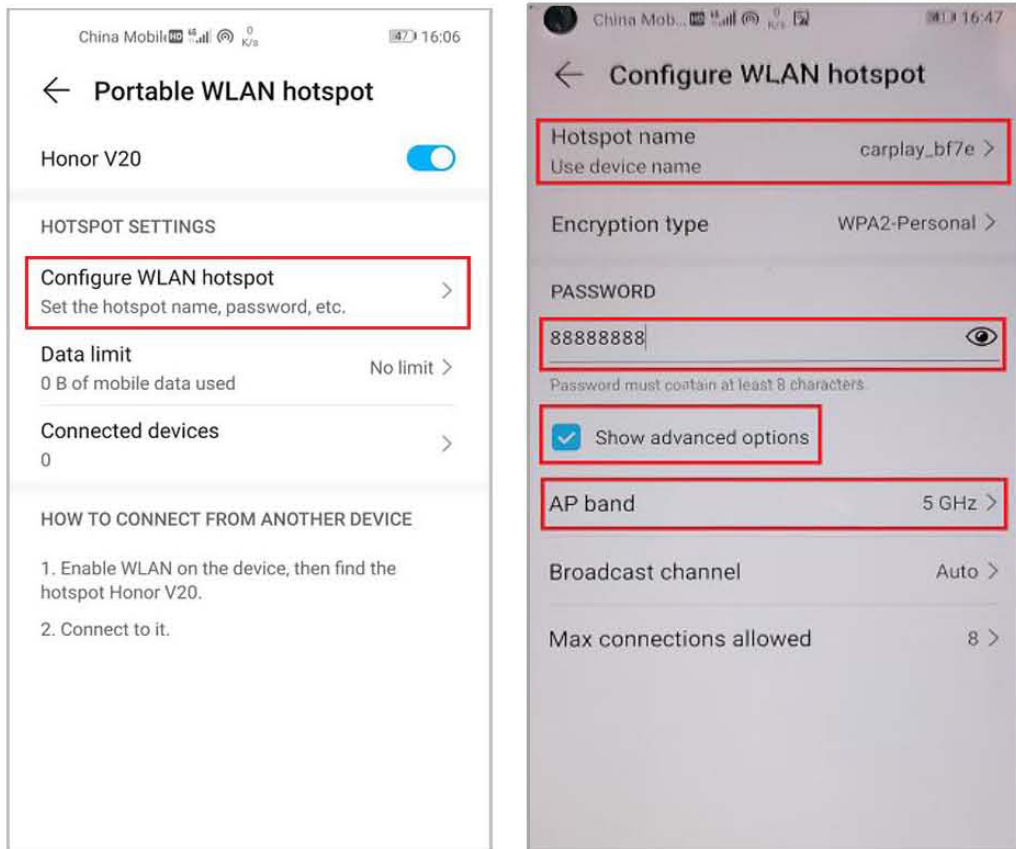
Step 4: Go to the “Mobile network” setting of your phone, select “Tethering & personal hotspot” and press “Portable WLAN hotspot”.



Step 5: On the “Portable WLAN hotspot” interface, select “Configure WLAN hotspot” to enter hotspot configuration interface, set the name and password of “Personal Hotspot” to be consistent with the name and password shown on the above “Mirroring” interface,

Step 6: Tick “Show advanced options” and select “5.0 GHz Band” for the hotspot AP frequency band; turn on the “Personal Hotspot” switch, return to the main

interface of the phone and open "mLink" to use mirroring function.



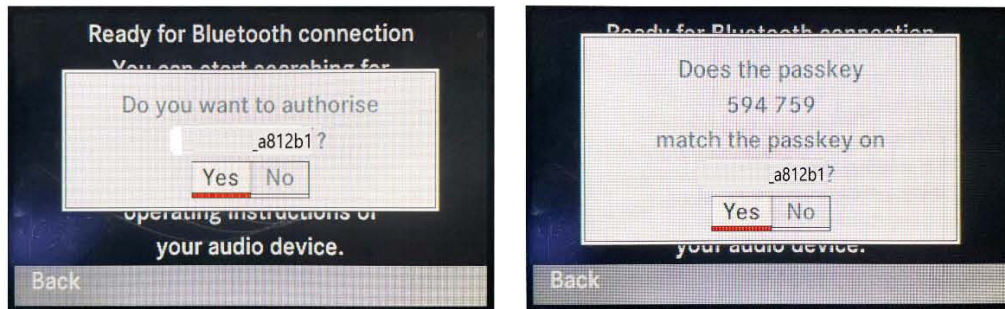
7. Sound Setting for CarPlay / Android Auto

Step 1: Open the Bluetooth audio of the original car host and select "Connect via BT audio device" and waiting for Bluetooth connection.



Step 2: Please select "Yes" when the screen shows "Do you want to authorize RoadTop_a812b1?"

Step 3: Select “Yes” again after the screen remind you to match the Bluetooth.



8. Rear Camera Connections

Please follow below snap shot to connect aftermarket rear view camera as per your requirements.

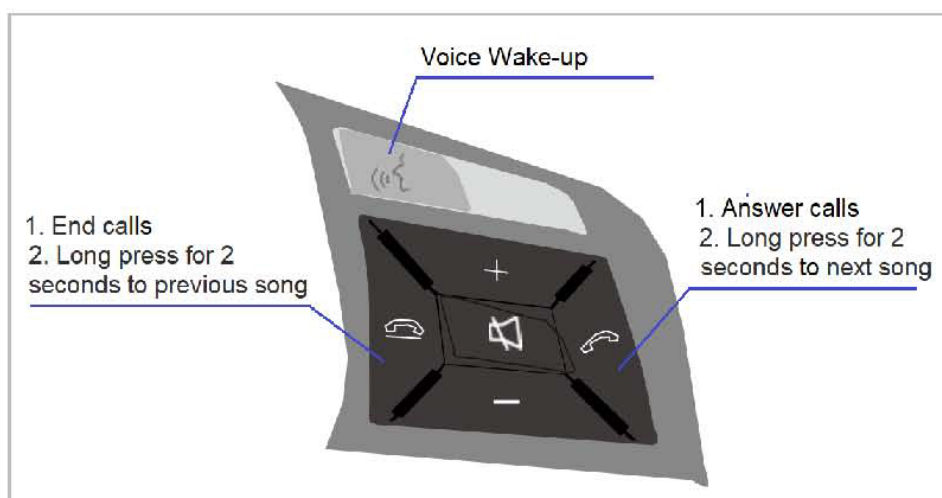


9. Common Operations Introduction

- 1) Supports knob operation
- 2) Supports to press “NAVI” button to enter CarPlay system.

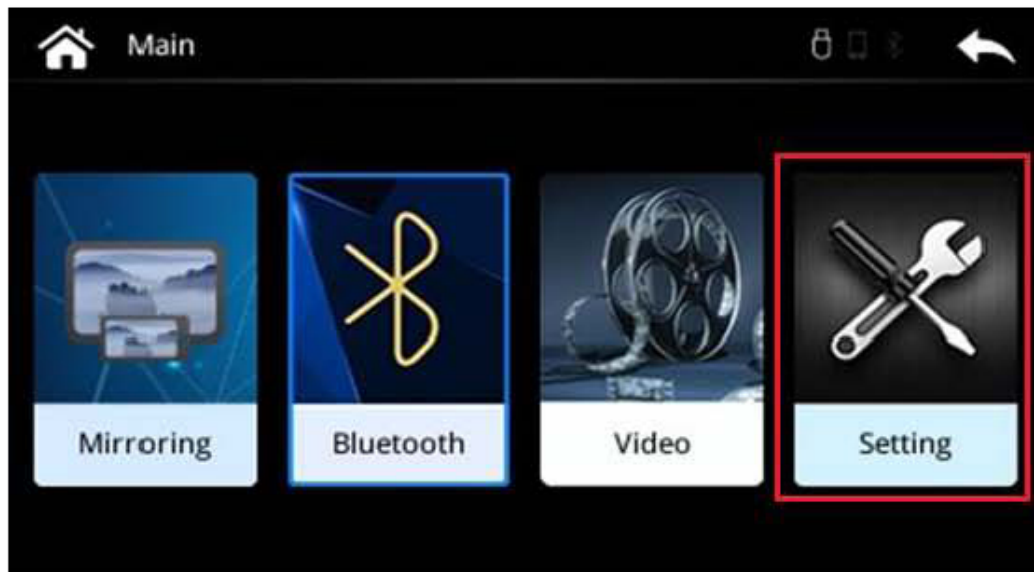


3) Supports right-side steering wheel control



10. Echo Cancellation

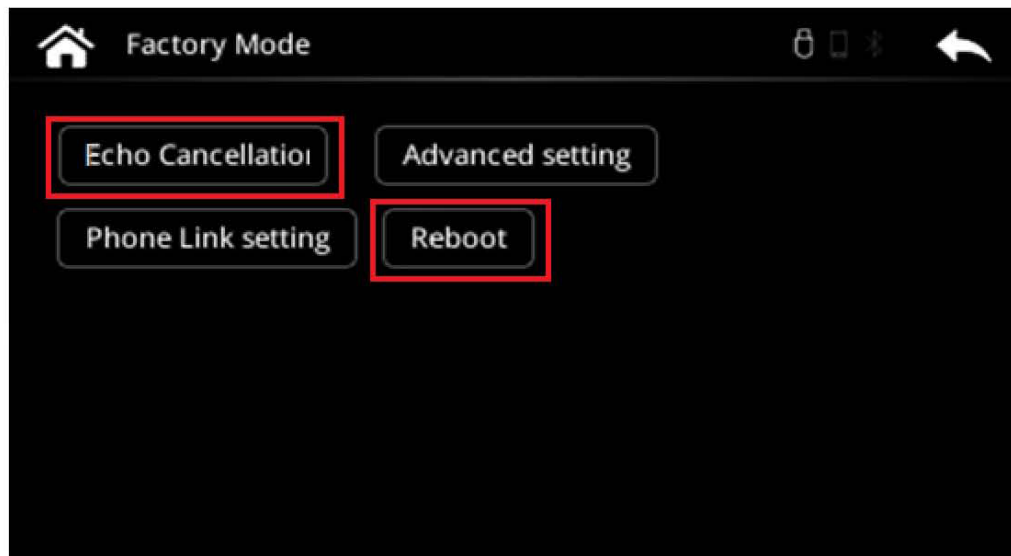
Step 1: Select "Setting" in the main menu interface.



Step 2: Go to "System" option and select "Factory Mode" to enter "Factory Mode" interface.



Step 3: Press "Echo Cancellation" option, after completion of these steps in turn, return to "Factory Mode" interface and click "reboot" to restart the system.



Notice: When correcting the echo, please make sure

1. Keep quiet surrounding the car;
2. Turn the volume to a moderate position, and then click "start" to start echo correction.